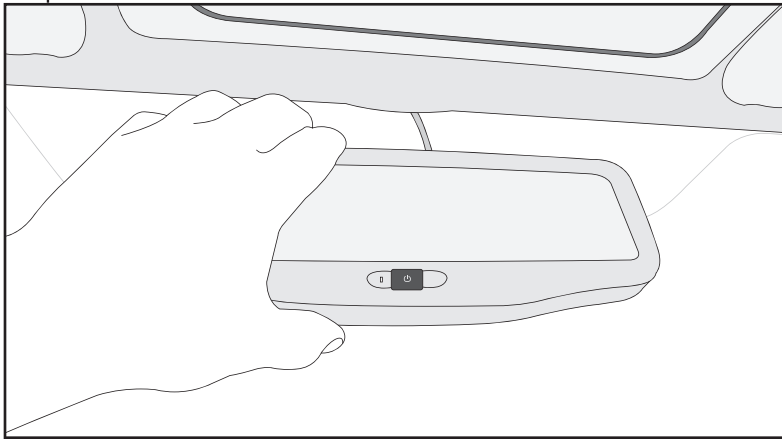
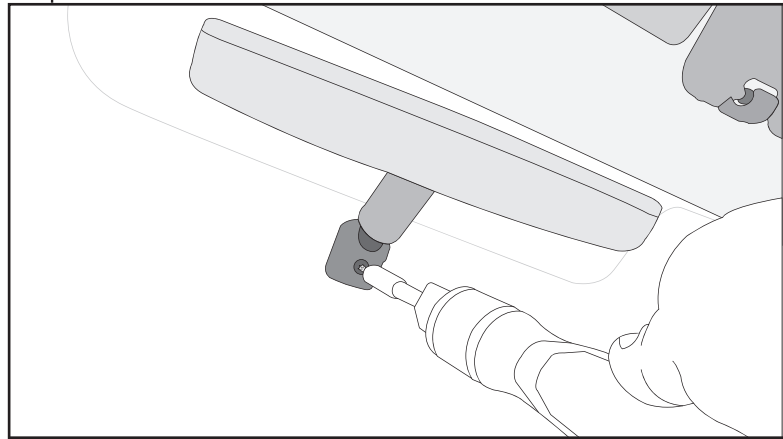


Step 1



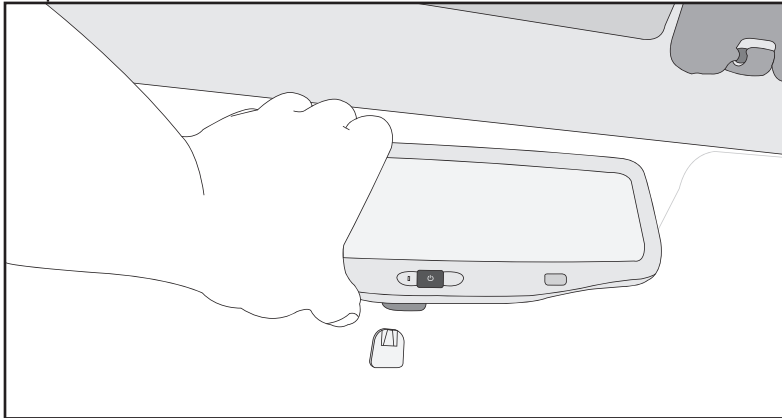
Tilt the vehicle's original mirror upwards.

Step 2



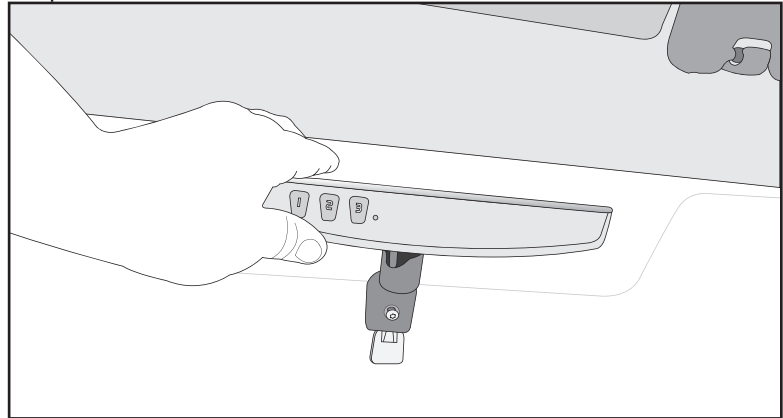
Using a T-20 torx bit, loosen the mirror's mounting screw.

Step 3



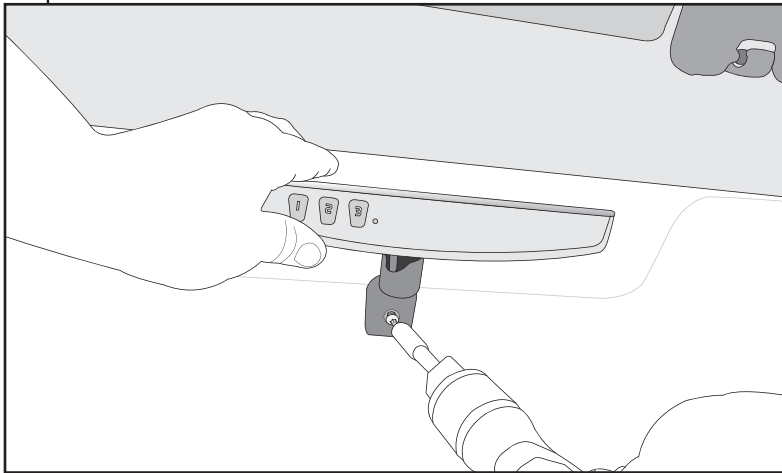
When the torx screw is loosened, lift the mirror upwards.

Step 4



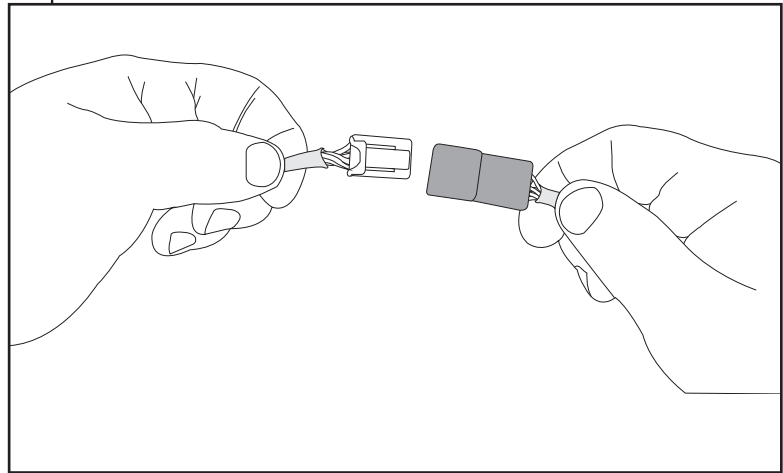
Place the new rear view mirror onto the windshield mounting lug.

Step 5

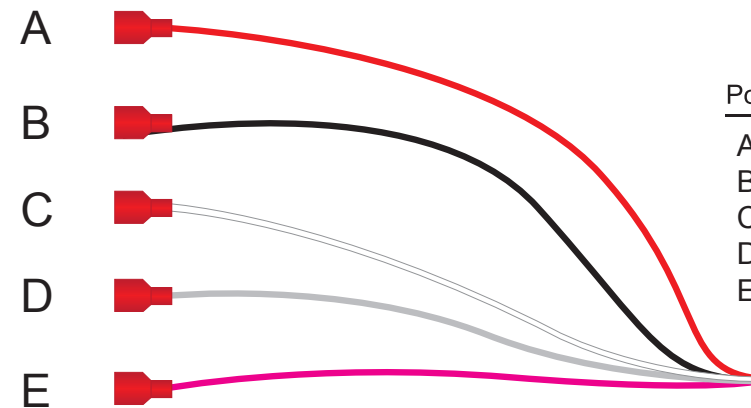


Tighten the mounting screw of the new mirror using the T-20 bit.

Step 6



Connect the mirror's harness to the included power harness.



**Power Harness Wiring**

- A: Red Wire - 12+ Volt Ignition Power
- B: Black Wire - Chassis Ground Point
- C: White Wire - Reverse 12+ Volt Input (Not Used)
- D: Grey Wire - Side View Mirror Auto-Dimming Ground Circuit
- E: Violet Wire - Side View Mirror Auto-Dimming 12+ Volt Circuit